

THE FUTURE OF BRIDGEWATER CREEK – WEMBLEY PARK

The aim of the Bridgewater Creek–Wembley Park Landscape Concept Plan is to:

- increase riparian plantings to both sides of Bridgewater Creek along its entire length in this location to 60m width
- demonstrate an urban ecological system that provides critical habitat and improves water quality through WSUD treatment train through the whole of Wembley Park and develop mechanisms to involve residents, visitors and school groups with the system
- highlight the need to review and improve the water treatment performance upstream at Bowies Flat Constructed Wetland as part of this system and downstream of Wembley Park
- remove the concrete channel in Giffin Park and naturalise that section
- improve safe access, recreation opportunities and connections

KEY SITE WORKS PROPOSALS

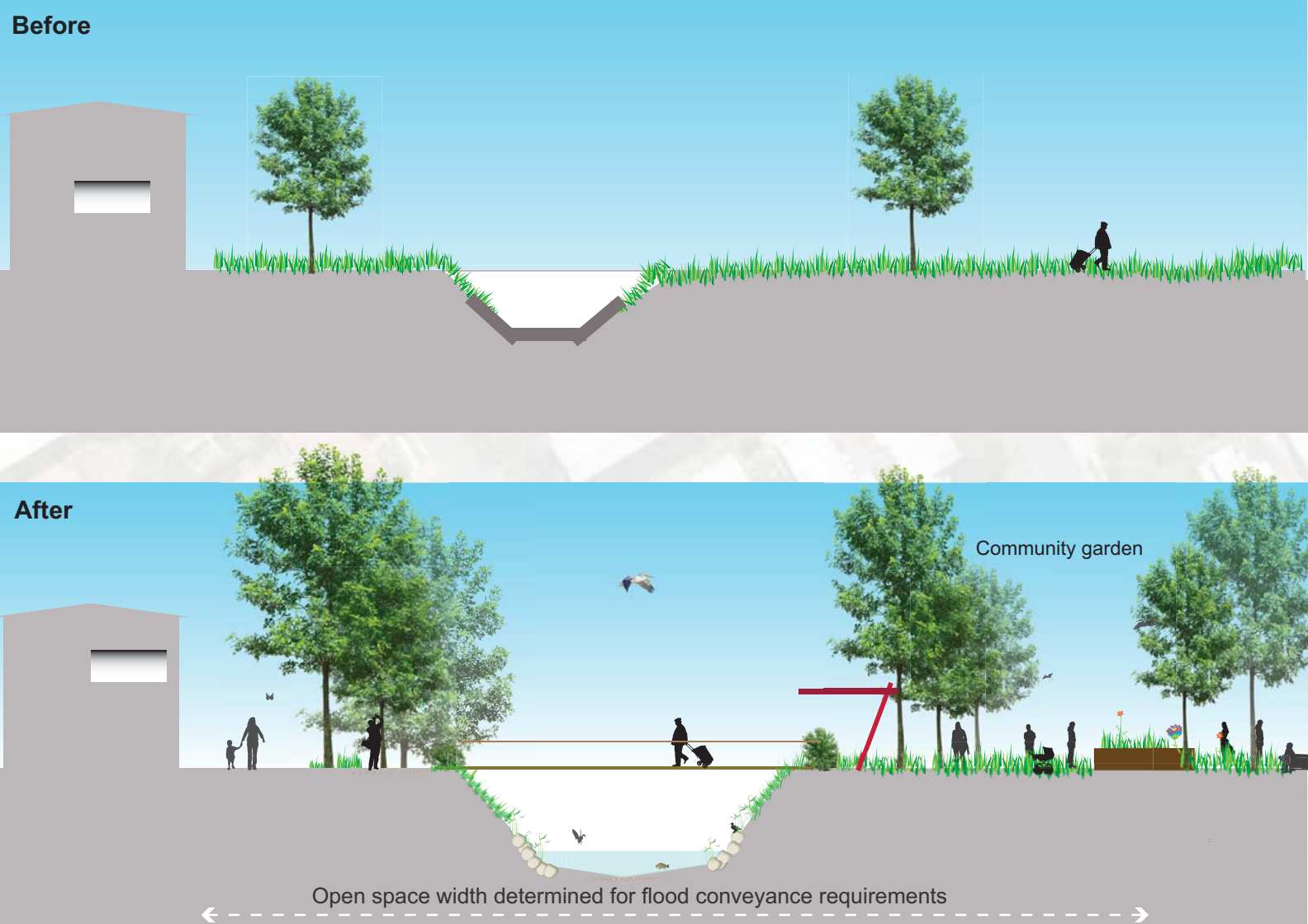
1. Freshwater lake, boardwalks, viewing platforms, connections across creek
2. Improve connection to Jackson Sreet and Woodrow Drive
3. New shelter and seating with BBQ facilities
4. New shade tree plantings and spectator seating
5. Realignment of existing path away from the creek and increase plantings
6. Four new hard courts to offset path realignment and increase riparian plantings
7. Court modified to half court with new seating and shade for riparian extension
8. New shade trees for carpark and native grass swale to filter run-off
9. New bird observation shelter within existing play area
10. New creek riparian zones, min' 30m width from creek centreline
11. Existing dog off-leash area
12. New community garden located on public land and new entrance into park through existing B.C.C easement to improve pedestrian/cycle access and connection into and through Wembley Park for the community.
13. New mini wetland to extend Bowies Flat with boardwalk improving connectivity
14. Bowies Flat Constructed Wetland



1. Freshwater lake retained by weir, treats water as part of a designed treatment train that allows for unobstructed flood conveyance



9. Proposed bird hide located with existing recreation and dog off- leash area, designed to allow flood water through its structure



13. Water treated in Wembley Park is considered as part of a complete treatment train including review of Bowies Flat Constructed Wetland upstream from this site along Bridgewater Creek.

NOTE: The following types of stormwater quality improvement techniques are considered suitable for incorporation as part of the Local Stormwater Management Plan for Bridgewater Creek.

Within Catchment Stormwater Quality Measures:

- in-line sediment and gross pollutant removal devices;
- lot scale measures for residential areas subject to redevelopment; and
- litter baskets in existing gully pits and inlets.

Regional Treatment facilities:

- artificial wetlands in existing parkland areas.

Waterway enhancement:

- enhancement of modified waterways in lower reaches to **more closely resemble natural waterways** (p.10). Such an approach to waterway enhancement is consistent with the recommendations of the Wembley Park Master Plan (p.16).

Final Draft Report Local Stormwater Management Plan, Bridgewater Creek Catchment BCC Vol 1 13.4.1999. Connell Wagner, Issue 2, Ref. 698501 CWAND Wembley Park Master Plan, Hassell (1997)



This Draft Strategic Landscape Concept Plan has been developed by the Norman Creek Catchment Group, a not-for-profit community organisation. The concept design requires hydraulic study and underground services located.

